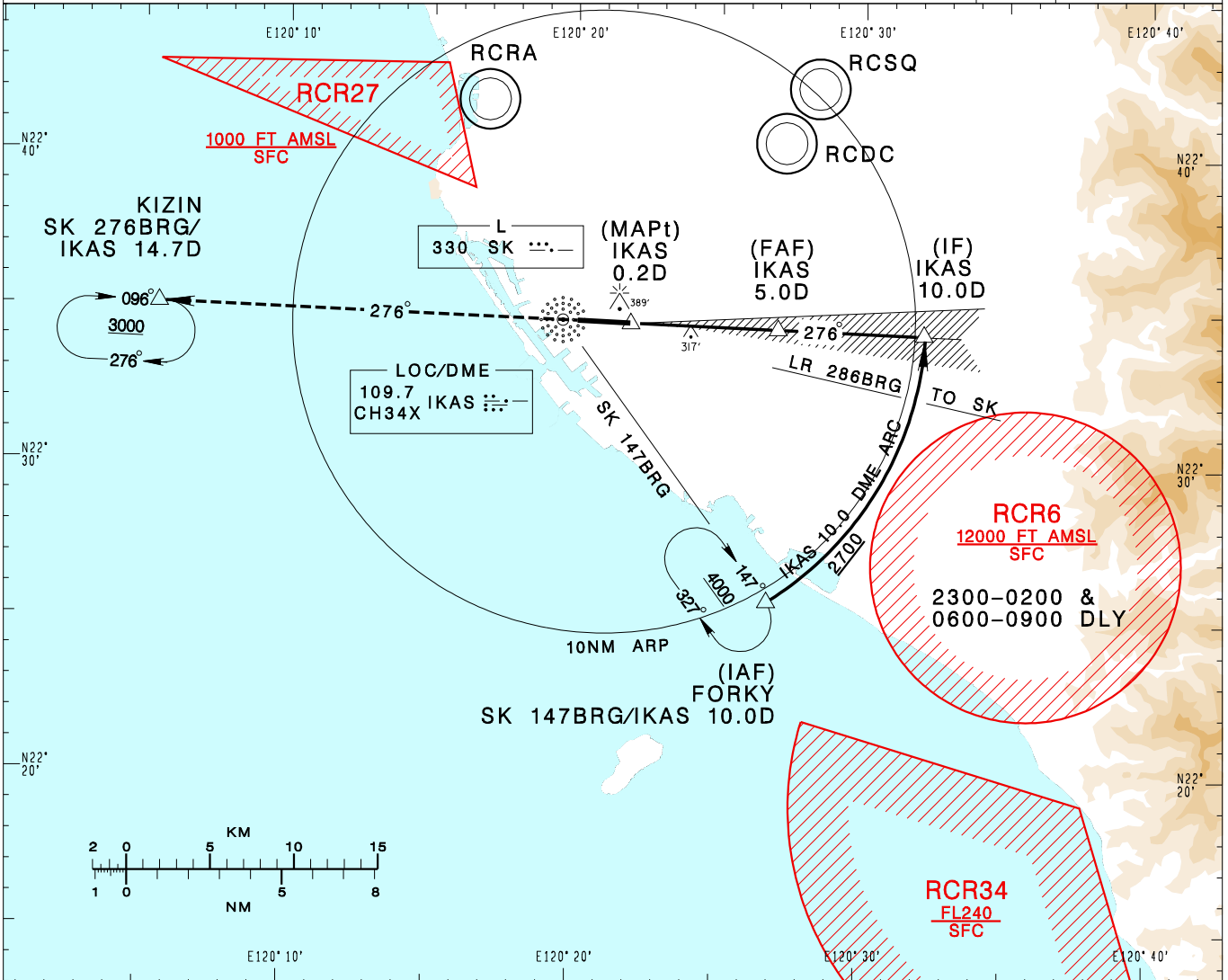


**高雄國際機場**  
KAOHSIUNG INTL AD

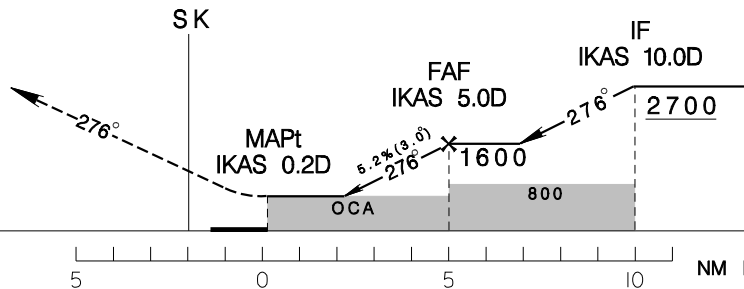
RCKH  
LOC RWY27

KAOHSIUNG APP 124.7 125.7	KAOHSIUNG TWR 118.7 120.7	ATIS 127.8	VAR 4°W-2023 ↑	12100' MSA ARP 25NM	
Apt Elev: 32'	Rwy27 DTHR Elev: 31'	Trans Level: FL130			Trans Alt: 11,000'
BEARINGS ARE MAGNETIC; DISTANCES ARE NAUTICAL MILES; ELEVATIONS, HEIGHTS IN FEET					



DIST to IKAS	2DME	3DME	4DME	5DME
ADVISORY ALT	660	980	1300	1600

MISSED APCH:  
CLIMB DIRECT TO SK, THEN  
TRACK SK 276BRG TO KIZIN,  
CLIMB TO 3000 AND HOLD.



MINIMA (OCA IN FT, VIS IN M, OCH IN FT)

CATEGORY	A		B		C		D	
	OCA	VIS	OCA	VIS	OCA	VIS	OCA	VIS
STRAIGHT IN	640	800	608		640	2100	608	
STRAIGHT IN (ALS OUT)	640	1600	608		640	2800	608	

NOTE  
1. CIRCLING NOT AUTHORIZED.  
2. THE INITIAL APCH ARC INFRINGES RCR-6 AREA, PRIOR COORDINATION WITH ROCAF WILL BE COMPLETED BY ATC BEFORE ISSUING CLEARANCE DURING RCR-6 ACTIVE HOURS.  
\* DME REQUIRED